

SECTION II

TM 9-2320-279-24P

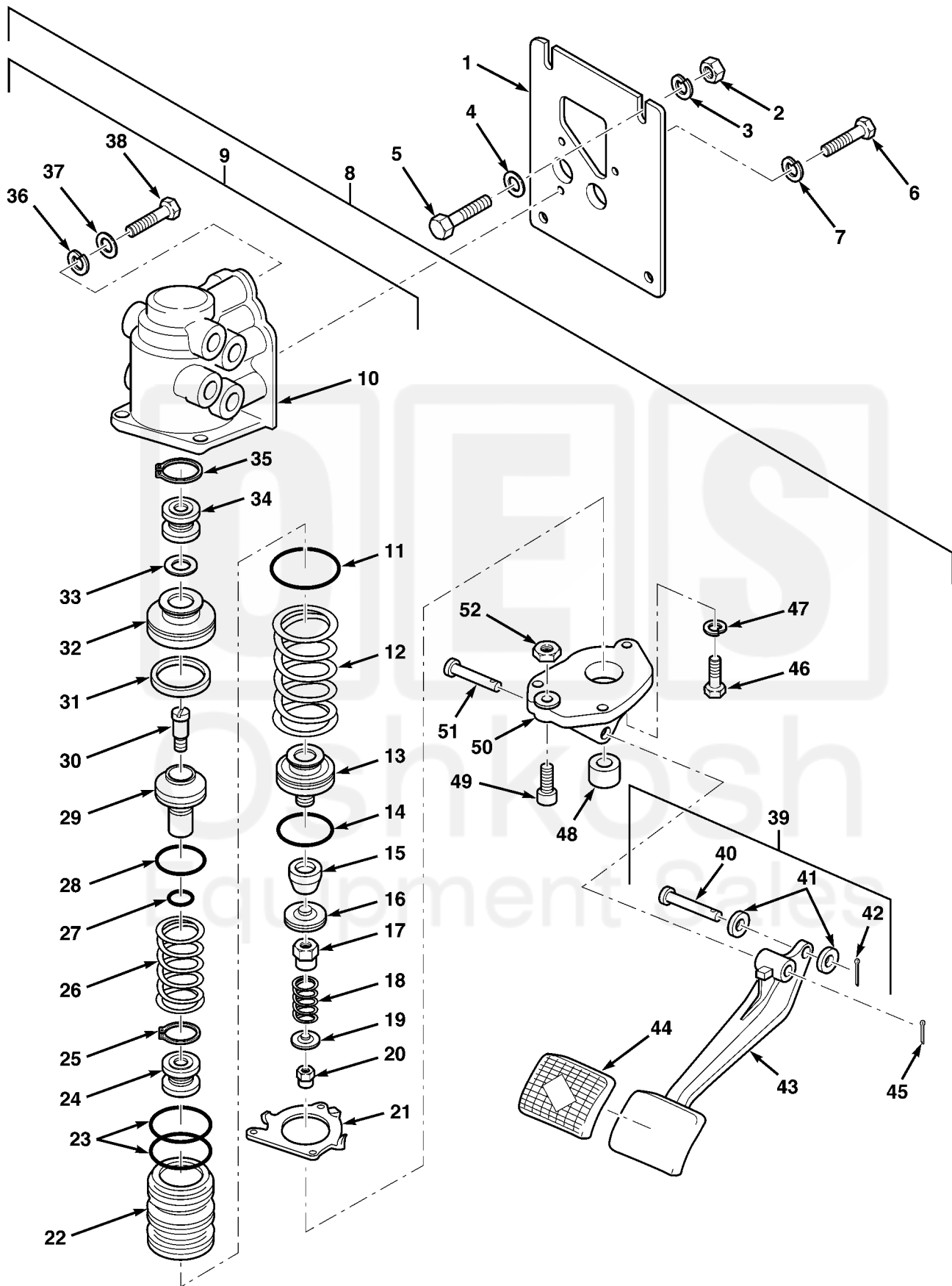


FIG.192 BRAKE TREADLE VALVE

| SECTION II | | | TM 9-2320-279-24P | | |
|-----------------------------|----------|-------|-------------------|---|-----|
| (1) | (2) | (3) | (4) | (5) | (6) |
| ITEM NO | SMR CODE | CAGEC | PART NUMBER | DESCRIPTION AND USABLE ON CODES(UOC) | QTY |
| GROUP 1208 AIR BRAKE SYSTEM | | | | | |
| FIG.192 BRAKE TREADLE VALVE | | | | | |
| 1 | PAOZZ | 45152 | 1353510 | BRACKET,ENGINE ACCE | 1 |
| 2 | PAOZZ | 45152 | 369AX1 | NUT,PLAIN,HEXAGON | 2 |
| 3 | PAOZZ | 45152 | 354AX | WASHER,LOCK | 4 |
| 4 | XDOZZ | 96906 | MS27183-12 | WASHER,FLAT | 2 |
| 5 | PAOZZ | 96906 | MS90725-34 | BOLT,MACHINE | 4 |
| 6 | PAOZZ | 80204 | B1821BH038C113N | SCREW,CAP,HEXAGON H | 3 |
| 7 | PAOZZ | 96906 | MS35338-46 | WASHER,LOCK | 3 |
| 8 | PAOFF | 06853 | 288268 | VALVE,BRAKE PNEUMAT | 1 |
| 9 | PAFFF | 06853 | 288383 | .VALVE ASSEMBLY,BRAK | 1 |
| 10 | PFFZZ | 06853 | 288270 | ..BODY ASSEMBLY,BRAKE | 1 |
| 11 | KFFZZ | 06853 | 247235 | ..O-RING PART OF KIT P/N 289352 | 1 |
| 12 | KFFZZ | 06853 | 247231 | ..SPRING,HELICAL,COMP PART OF KIT | 1 |
| | | | | P/N 289352 | |
| 13 | XAFZZ | 06853 | 247222 | ..PISTON,BRAKE VALVE | 1 |
| 14 | KFFZZ | 06853 | 298453 | ..PACKING,PREFORMED PART OF KIT P/N .. | 1 |
| | | | | 289352 | |
| 15 | KFFZZ | 11083 | 50768 | ..MOUNT,RESILIENT PART OF KIT P/N | 1 |
| | | | | 289352 | |
| 16 | PFFZZ | 06853 | 290187 | ..SEAT,VALVE | 1 |
| 17 | KFFZZ | 06853 | 290188 | ..NUT,SLEEVE PART OF KIT P/N 289352 .. | 1 |
| 18 | KFFZZ | 06853 | 290185 | ..SPRING,HELICAL,COMP PART OF KIT | 1 |
| | | | | P/N 289352 | |
| 19 | XAFZZ | 06853 | 290189 | ..GUIDE,SPRING | 1 |
| 20 | KFFZZ | 96906 | MS21044D3 | ..NUT,SELF-LOCKING,HE PART OF KIT | 1 |
| | | | | P/N 289352 | |
| 21 | PFFZZ | 06853 | 294515 | ..PLATE,RETAINING,SHA | 1 |
| 22 | XAFZZ | 06853 | 288772 | ..BODY,PISTON | 1 |
| 23 | KFFZZ | 06853 | 247233 | ..O-RING PART OF KIT P/N 289352 | 1 |
| 24 | KFFZZ | 06853 | 279754 | ..GUIDE,VALVE STEM PART OF KIT P/N ... | 1 |
| | | | | 289352 | |
| 25 | PFFZZ | 06853 | 240345 | ..CLIP,RETAINING | 1 |
| 26 | KFFZZ | 06853 | 247224 | ..SPRING,HELICAL,COMP PART OF KIT | 1 |
| | | | | P/N 289352 | |
| 27 | KFFZZ | 06853 | 239136 | ..O-RING PART OF KIT P/N 289352 | 1 |
| 28 | KFFZZ | 06853 | 247226 | ..O-RING PART OF KIT P/N 289352 | 1 |
| 29 | XAFZZ | 06853 | 290202 | ..PISTON,VALVE | 1 |
| 30 | XAFZZ | 06853 | 290186 | ..SCREW,SHOULDER | 1 |
| 31 | KFFZZ | 06853 | 247234 | ..PACKING,PREFORMED PART OF KIT P/N .. | 1 |
| | | | | 289352 | |
| 32 | XAFZZ | 06853 | 247213 | ..PISTON,VALVE | 1 |
| 33 | KFFZZ | 06853 | 247221 | ..O-RING PART OF KIT P/N 289352 | 1 |
| 34 | KFFZZ | 06853 | 283304 | ..CARTRIDGE,INLET PART OF KIT | 1 |
| | | | | P/N 289352 | |
| 35 | PFFZZ | 96906 | MS16627-1137 | ..RING,RETAINER PART OF KIT P/N | 1 |
| | | | | 289352 | |
| 36 | PFFZZ | 06853 | 246368 | ..DIAPHRAGM,VALVE,FLA | 1 |
| 37 | PFFZZ | 06853 | 246369 | ..WASHER,RECESSED | 1 |
| 38 | PFFZZ | 06853 | 246370 | ..SCREW,TAPPING | 1 |
| 39 | PFOOO | 06853 | 281748 | ..PEDAL,CONTROL | 1 |
| 40 | PAOZZ | 06853 | 200981 | ..PIN,STRAIGHT,HEADED | 1 |

| SECTION II | | | TM 9-2320-279-24P | | |
|------------|-------|-------|-------------------|--------------------------------------|-----|
| (1) | (2) | (3) | (4) | (5) | (6) |
| ITEM | SMR | | PART | | |
| NO | CODE | CAGEC | NUMBER | DESCRIPTION AND USABLE ON CODES(UOC) | QTY |
| 41 | PAOZZ | 06853 | 245118 | ..ROLLER,LINEAR-ROTAR | 2 |
| 42 | PAOZZ | 96906 | MS24665-281 | ..PIN,COTTER | 1 |
| 43 | PFOZZ | 06853 | 246157 | ..PEDAL,CONTROL | 1 |
| 44 | PAOZZ | 06853 | 246279 | ..PAD,PEDAL | 1 |
| 45 | PAOZZ | 96906 | MS24665-281 | ..PIN,COTTER | 2 |
| 46 | PAOZZ | 06853 | 203788 | ..BOLT,MACHINE | 3 |
| 47 | PAFZZ | 06853 | 237648 | ..WASHER,LOCK | 3 |
| 48 | PAOZZ | 06853 | 244680 | ..SLEEVE,DIRECTIONAL | 1 |
| 49 | PAOZZ | 06853 | 243890 | ..THUMBSCREW | 1 |
| 50 | PAOZZ | 06853 | 291883 | ..PLATE,MOUNTING,BRAK | 1 |
| 51 | PAOZZ | 06853 | 240445 | ..PIN,STRAIGHT,HEADED | 1 |
| 52 | PAOZZ | 06853 | 230250 | ..NUT,PLAIN,HEXAGON | 1 |

END OF FIGURE

